

CALPORTLAND

Dupont, WA
Enumclaw, WA
Gold Bar, WA
Kenmore, WA
Port Ludlow, WA

Seattle, WA (Georgetown)
Snoqualmie, WA
Vancouver, WA
Vashon, WA



Building materials supplier

ENTRY-LEVEL POSITIONS: Customer service dispatcher, Quality control technician, Terminal ship unloader

DESIRED SKILLS: Positive attitude, shows up to work on time everyday

BENEFITS OFFERED: Medical, dental, vision, PTO, overtime

HOURS: 24/7; many shifts

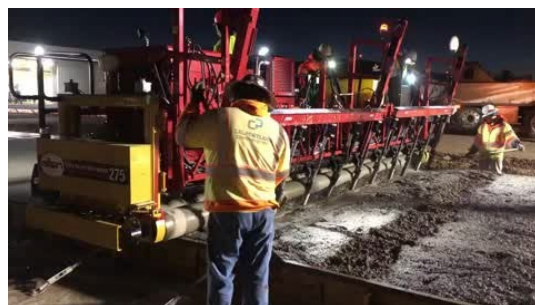
STARTING WAGES: \$18 - \$25/hr depending on position and experience

HIRING REQUIREMENTS: resume, drug test, interview (cover letter is a bonus)

HIRING TIMELINE: 1-2 weeks

GOOD FOR: diesel mechanic students * students who like heavy duty equipment + interested in concrete, geology, construction or trucks

URL: www.calportland.com



Maybe it's too obvious, but often we don't see the fun careers that literally build the world around us.

CalPortland concrete builds our bridges, roads, buildings. They create the right mix from local quarries for everything.

CalPortland has a variety of career pathways including: concrete lab testing and engineering, diesel mechanics, heavy equipment operators, environmental permitting and clean up, CDL drivers, project managers and supervisors.. and more!

CalPortland pours concrete on rebar – and that rebar is made by Nucor Steel! (also in this guide)

