

ALASKAN COPPER AND BRASS



Near Link
Light Rail
station! |

Seattle, WA (SODO)
Kent, WA

*Metal fabricators & manufacturers; supplier of
corrosion-resistant metals*

ENTRY-LEVEL POSITIONS OPEN: warehouse, shipping and
receiving

Current positions can be seen here

<http://www.alascop.com/Jobs>

DESIRED SKILLS: show up to work on time, work hard, get
along with other people

BENEFITS OFFERED: medical, 401k, vision, dental

STARTING WAGES: \$15hr

HOW TO APPLY: Send resume

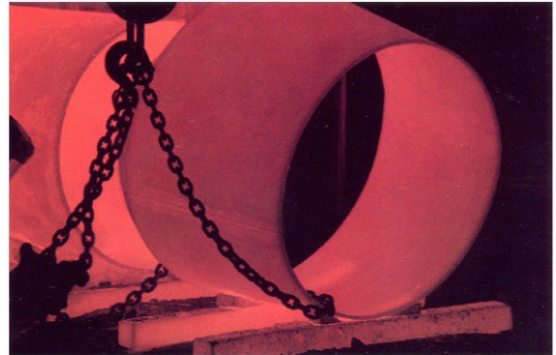
to jobs@alaskancopper.com or apply online

HIRING REQUIREMENTS: resume, drug test, interview
(cover letter is a bonus)

HIRING TIMELINE: 1-2 weeks

GOOD FOR: metal fabricating students

URL: www.alaskancopper.com



Heat-treatment stress relieves fittings after forming.



Heating element of a vapor recompression evaporator being carefully prepared for special shipment.

AMERICAN SEAFOODS

Alaska (Bering Sea)

Seattle, WA

American Seafoods operates a fleet of six fishing vessels in the sustainable fisheries of the Bering Sea and the North Pacific Ocean. We are the world's largest at-sea processor of Wild Alaska Pollock and hold the largest allocation of Wild Pacific Hake (Whiting).



ENTRY-LEVEL POSITIONS OPEN: oiler/wiper, welders, processors, deckhands (do not need merchant mariner card) Current positions can be seen here

<https://www.americanseafoods.com/jobs/vessels-crew-jobs>

<https://www.americanseafoods.com/jobs/corporate-jobs>

CAREER ASPIRATIONS: Captain, Chief Engineer, Foreman or Supervisor, Marine electrician

Hear about career pathways here:

<https://www.americanseafoods.com/jobs/vessels-crew-jobs>

DESIRED SKILLS: hard workers, willing to work overtime, willing to be at sea OR technically inclined and punctual to work in repair yard

BENEFITS OFFERED: medical, 401k, vision, dental

STARTING WAGES: oiler/wipers, processors: \$50,000/yr for 7 months at sea (scattered, not at one time), \$17/hr in repair yard

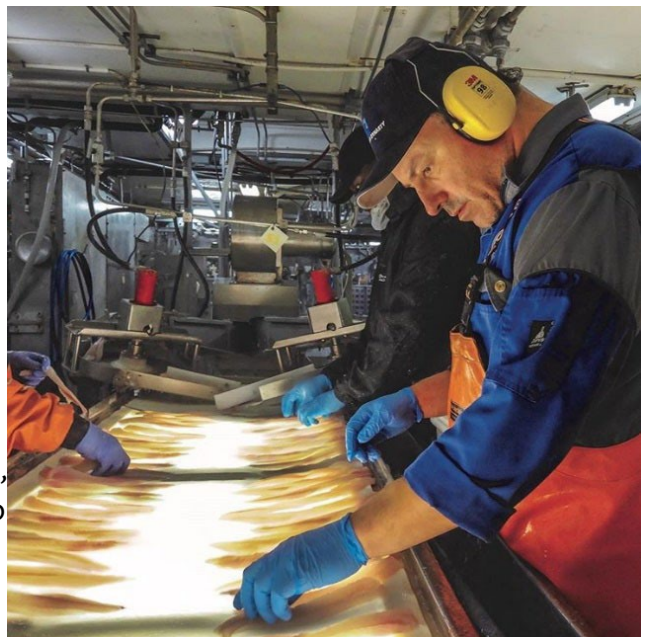
HOW TO APPLY: Online,

HIRING REQUIREMENTS: resume, drug test, interview (cover letter is a bonus)

HIRING TIMELINE: 1-2 weeks

GOOD FOR: someone who enjoys outside * can work long hours * welders * team oriented * OK being at sea

URL: <https://www.americanseafoods.com/>



AVIATION TECHNICAL SERVICES

Everett, WA
Moses Lake, WA

Maintenance, Repair and Overhaul of aircrafts

ENTRY-LEVEL POSITIONS OPEN: mechanic apprentices, painters and finishers

DESIRED SKILLS: mechanically inclined, reliable **BENEFITS**

OFFERED: Airframe Mechanic Certificate [at 18 months of training], medical, dental, tuition reimbursement, paid-time-off, overtime

HOURS: open 24/7, many shifts

STARTING WAGES: \$16.00/hr; \$17/hr after 6 months

HOW TO APPLY: Apply online at www.atsmro.com/careers

HIRING REQUIREMENTS: resume, drug test, interview, background check

HIRING TIMELINE: 1-2 weeks

GOOD FOR: aerospace students * mechanically inclined * engineer-aspiring students

URL: www.atsmro.com

ACCEPTING 20 APPRENTICES THIS SUMMER, more in September.



ATS takes the training very seriously and checks in with apprentices every 2-4 weeks to make sure the apprentice is getting the most out of their training.

Training program takes about 18 months, but everyone goes at their own pace.



BAKES MARINE

Issaquah, WA
North Bend, WA (2023)

Whether you need a simple winterization service or a complete engine overhaul, Bakes Marine has the expertise and knowledge to make sure you spend every possible minute of the season on the water and not in the shop.



COMPANY SIZE: 15

ENTRY-LEVEL POSITIONS OPEN: Customer Service, Warehouse, Jr. Service Technician

BENEFITS OFFERED: Medical, dental, vision, 401K, paid time off, paid holidays

STARTING WAGES: \$15-\$20/hour

HOW TO APPLY: in-person, by email:

support@bakesmarine.com or online:

<https://www.bakesmarine.com/employment>

HIRING REQUIREMENTS: Drivers License, Interview(s)

HIRING TIMELINE: less than one week

GOOD FOR: Anyone who loves watersports or is mechanical by nature.

URL: <https://www.bakesmarine.com/>



Willing to hire 17-year-olds.



BASTA BOATLIFTS

Bellevue, WA

Manufacture hydraulic boat lifts

ENTRY-LEVEL POSITIONS OPEN:

warehouse associate, manufacturing technician, service tech

of openings: 2-3

DESIRED SKILLS: Reliable, honest, self-starter; welding experience for welders

BENEFITS OFFERED: medical, 401k, dental, overtime

STARTING WAGES: \$15-22/hr

HOW TO APPLY: Email or in person; email resume to service@gobasta.com

HIRING REQUIREMENTS: resume, interview; require a welding sample for welders
HIRING TIMELINE: less than 1 week

GOOD FOR: Someone who likes smaller, family-owned companies * willing to

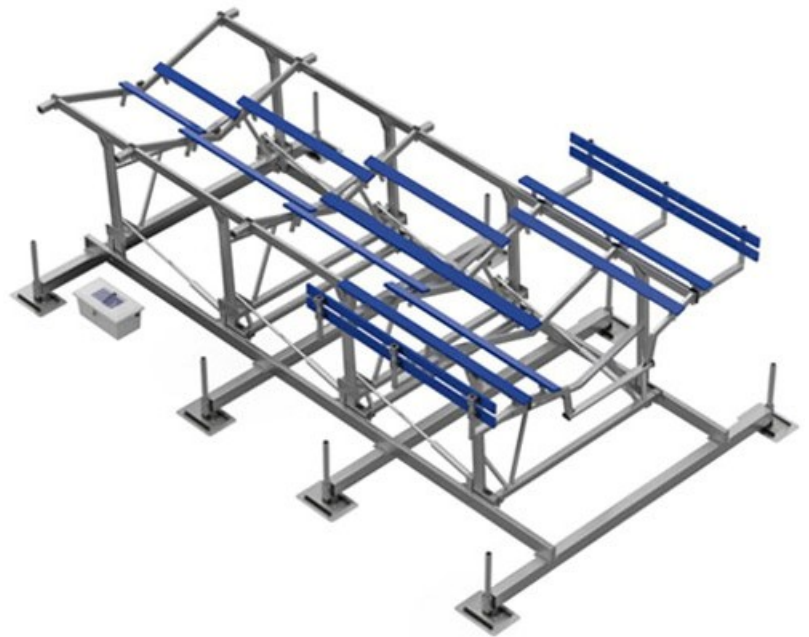
URL: <https://bastaboatliffts.com>

WILLING TO HIRE SOMEONE PART TIME WILL CONSIDER SOMEONE WHO IS 16 or 17

Basta Boatlifts has a fun, family environment. They work together and have fun together.

Sometimes you have to work holidays, but the pay is well above average holiday pay.

Basta offers better schedule flexibility than most companies!



BOISE CASCADE

Kettle Falls, WA
Colville, WA

A Fortune 500 Wood Products Company.

COMPANY SIZE: 375 (WA employees)

ENTRY LEVEL POSITIONS OPEN: 5 available (production laborer)

DESIRED SKILLS: Good attitude and effort with the ability to learn new tasks, good attendance with focus on safety

BENEFITS OFFERED: Medical, dental, PTO, 401K, job advancement, overtime available

HOURS: Varies

STARTING WAGES: \$18.59-\$20.95 + shift differential

HOW TO APPLY: bc.com/careers, online

HIRING REQUIREMENTS: background check, drug test, interview

HIRING TIMELINE: 1-2 weeks

URL: www.bc.com



CALPORTLAND

Dupont, WA
Enumclaw, WA
Gold Bar, WA
Kenmore, WA
Port Ludlow, WA

Seattle, WA (Georgetown)
Snoqualmie, WA
Vancouver, WA
Vashon, WA



Building materials supplier

ENTRY-LEVEL POSITIONS: Customer service dispatcher, Quality control technician, Terminal ship unloader

DESIRED SKILLS: Positive attitude, shows up to work on time everyday

BENEFITS OFFERED: Medical, dental, vision, PTO, overtime

HOURS: 24/7; many shifts

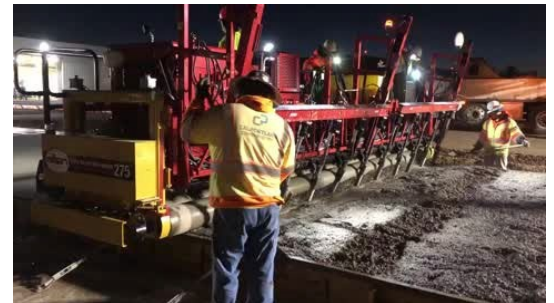
STARTING WAGES: \$18 - \$25/hr depending on position and experience

HIRING REQUIREMENTS: resume, drug test, interview (cover letter is a bonus)

HIRING TIMELINE: 1-2 weeks

GOOD FOR: diesel mechanic students * students who like heavy duty equipment + interested in concrete, geology, construction or trucks

URL: www.calportland.com



Maybe it's too obvious, but often we don't see the fun careers that literally build the world around us.

CalPortland concrete builds our bridges, roads, buildings. They create the right mix from local quarries for everything.

CalPortland has a variety of career pathways including: concrete lab testing and engineering, diesel mechanics, heavy equipment operators, environmental permitting and clean up, CDL drivers, project managers and supervisors.. and more!

CalPortland pours concrete on rebar – and that rebar is made by Nucor Steel! (also in this guide)



CSR MARINE

Seattle, WA (Ballard)
Des Moines, WA

Repair and maintenance boat yard

ENTRY-LEVEL POSITIONS: Laborers, painters

DESIRED SKILLS: shows up to work on time with a positive attitude, wants to learn, enjoys people

BENEFITS OFFERED: Medical, PTO, overtime

HOURS: Day shifts, starts at 7:30am

STARTING WAGES: \$15/hr, quick to increase wages

HOW TO APPLY: bring resume in-person to desired location

HIRING REQUIREMENTS: resume, interview

HIRING TIMELINE: less than 1 week

GOOD FOR: students from automotive classes * students who love boats or cars.

URL: www.csrmarine.com

Right on the water! Very fun group of people who enjoy boats, cars, motorcycles, and the rest.

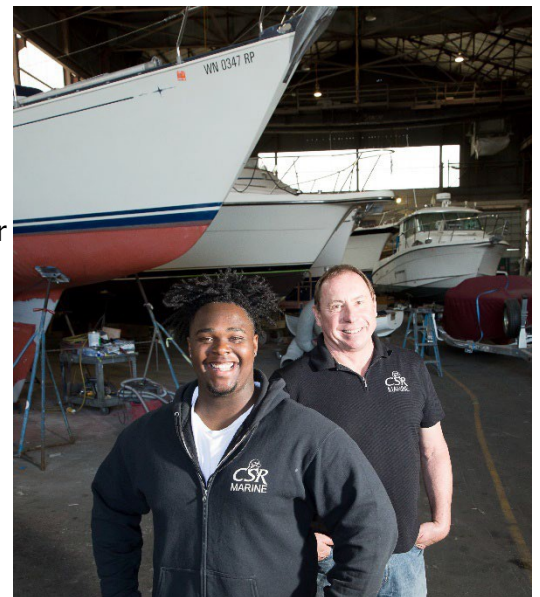
Des Moines location focuses more on mechanical work, Ballard focuses more on body repairs.

A nice story about a senior like you!

Scott (owner) is one of the most likable company owners in this guide. Scott hated school and almost dropped out of high school; but shop class helped him graduate. Now he runs a 9 million dollar a year company – and growing!

Malcolm, pictured here, was hired the day after her turned 18. He showed up every day on time with a positive attitude and got a pay raise his second week. By 19, Malcolm was making \$40,000.

In conclusion: being on time (punctual) is extremely important and often rewarded.



EMERALD HARBOR MARINE

Seattle, WA (Magnolia)

Maintenance, repair and refitting of yachts

COMPANY SIZE: 20

TYPICAL # OF OPEN ENTRY LEVEL POSITIONS: 2

ENTRY-LEVEL POSITIONS: helper of different departments (work with electronic systems, water systems, body repair, welding)

DESIRED SKILLS: attention to detail, motivated to learn

BENEFITS OFFERED: Medical, PTO, 401K

HOURS: Day shifts

STARTING WAGES: \$15/hr with quick increases

HOW TO APPLY: in person

HIRING REQUIREMENTS: resume, interview

HIRING TIMELINE: 1 week or less

GOOD FOR: creative thinkers * someone interested in trying out a variety of trades * wants a lot of one-on-one training with experts

URL: <http://www.emharbor.com/>



EVERETT SHIP REPAIR

Everett, WA

Repair, Maintenance, and Complex Conversion for all vessel types.

ENTRY LEVEL POSITIONS OPEN: typically, 1-3 jobs available (laborer to become apprentices in: paint, welding, machining, crane operator, ship fitting, pipe fitting).

DESIRED SKILLS: Strong work ethic, good attitude and works well with others, self-management, learning/adaptability skills.

BENEFITS OFFERED: Medical, dental, PTO, 401K, paid birthday after 90 days, job/trade advancement, friendly teams and staff.

HOURS: No swing shift

STARTING WAGES: \$13.77/laborer (varies with skills and trade).

HOW TO APPLY: Apply online at <https://everettshiprepair.com/careers> or at the front office in Everett (2730 Federal Ave, Everett, WA, 98201).

HIRING REQUIREMENTS: Background check, drug test, interview. (Will not hire someone part-time, or under the age of 18).

HIRING TIMELINE: 1-2 weeks

GOOD FOR: Students who like working outside.

URL: everettshiprepair.com



FLUID MOTION LLC, manufacturer of: **CUTWATER BOATS & RANGER** **TUGS**

Arlington, WA
Auburn, WA
Kent, WA
Monroe, WA

Manufacturers of small sized luxurious boats with cabins
(mini yachts)

COMPANY SIZE: 320

ENTRY-LEVEL POSITIONS: laminator, assembler, painter

TYPICAL # OF OPEN ENTRY-LEVEL POSITIONS: 10+

DESIRED SKILLS: show up to work on time every day,
willingness to learn and take feedback

BENEFITS OFFERED: Medical, PTO, 401K

HOURS: Day shifts

STARTING WAGES: \$17

HOW TO APPLY: Online, in person, by email. Send resume
to human.resources@rangertugs.com and ask if you can apply
to an entry-level position

HIRING REQUIREMENTS: resume, drug test, interview
(cover letter a bonus)

HIRING TIMELINE: 1-2 weeks

GOOD FOR: manufacturing students * collision repair
students * woodworking students

URL: www.cutwaterboats.com www.rangertug.com



GENERAL DYNAMICS - NASSCO

Bremerton, WA

A Fortune 100 Company. NASSCO as a part of General Dynamics, performs Ship Repair as a government contractor.

COMPANY SIZE: 200

ENTRY-LEVEL POSITIONS: fire-watch, handyperson, welder

TYPICAL # OF OPEN ENTRY LEVEL POSITIONS: 10

DESIRED SKILLS: attention to detail, willingness to learn, motivated to advance your career, any electrical or welding experience

BENEFITS OFFERED: Medical, Vision, Dental, 401k, Tuition Reimbursement

HOURS: Day shifts, night shifts

STARTING WAGES: \$13 – 30/hr depending on experience

HOW TO APPLY: online; <https://jobs.nassco.com/>

HIRING REQUIREMENTS: resume, background check, drug test, interview (Cover letter a bonus!!)

HIRING TIMELINE: 1-2 weeks

GOOD FOR: students who enjoy metal fabricating * eager to learn new skills * students who want to support our Navy

URL: <https://nassco.com/>



There is a large fab shop in Bremerton where they machine and fix pieces of the ships and submarines, but they are also contracted with the Puget Sound Naval Shipyard to work on submarines and ships General Dynamics built on the East Coast.



GIG HARBOR BOAT WORKS

Gig Harbor, WA

Tacoma, WA

Gig Harbor Boat Works is a custom builder of high-quality rowing and sailing boats. The designs are modern fiberglass reproductions of traditional wood boats from the days of working sail.



COMPANY SIZE: 8

ENTRY-LEVEL POSITIONS OPEN: Boat Builder, Shop Assistant, Fiberglass Laminator (trainee)

BENEFITS OFFERED: Medical, Dental, Vision, 401K, Paid time off (30 hour/week minimum to be eligible for medical/dental/vision benefits)

STARTING WAGES: \$17-\$20/hour

HOW TO APPLY: By email: jobs@ghboats.com, in-person, or online

HIRING REQUIREMENTS: Cover letter, 18 years of age, Interview(s)

HIRING TIMELINE: 1-2 weeks

GOOD FOR: Students who are mechanically inclined

URL: <https://ghboats.com/>



MANUFACTURING INDUSTRIAL COUNCIL

GM NAMEPLATE

Seattle, WA (Magnolia)

Custom manufacturer for a variety of industries; aerospace, appliance, electronics, cosmetics

COMPANY SIZE: 300+

ENTRY-LEVEL POSITIONS: large variety of titles; to view current openings go to <https://gmnameplate.com/careers/positions>

DESIRED SKILLS: pays attention to detail, get along with others, show up on time, enjoy machining or electronics

BENEFITS OFFERED: Medical, PTO, 401K

HOURS: 24/7; 3 shifts

STARTING WAGES: \$16 – 18/hr

HOW TO APPLY: online <https://gmnameplate.com/careers/positions>

HIRING REQUIREMENTS: interview, drug test, background check

HIRING TIMELINE: 1 – 2 weeks

GOOD FOR: manufacturing students * machining students

* Students who enjoy CAD or programming

URL: <https://gmnameplate.com/>



HARRIS REBAR

Auburn, WA
Lake Stevens, WA
Fredrickson, WA
Puyallup, WA

Rebar fabricator and installer

COMPANY SIZE: local fab shops have about 100 employees;
100 iron workers in the field

ENTRY-LEVEL POSITIONS: fabricator trainee, detailer trainee

View current positions here <https://careers.harrisrebar.com/>

DESIRED SKILLS: drafting, auto cad, attention to detail,
structural drawing

BENEFITS OFFERED: Medical, Dental, Paid time off, 401k

HOURS: day shift, swing shift

STARTING WAGES: \$17+/hr

Typically increase wages after 90 days

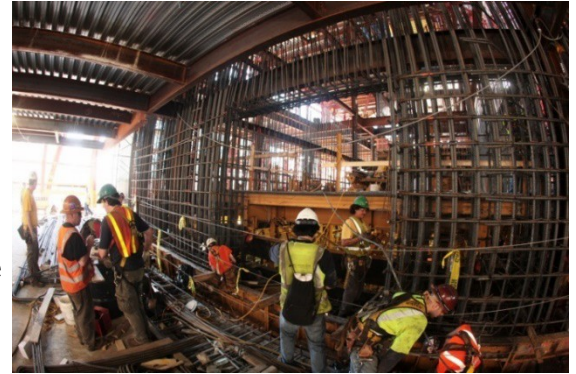
HOW TO APPLY: apply online at <https://careers.harrisrebar.com/>

HIRING REQUIREMENTS: panel interview, drug test, physical
ability test

HIRING TIMELINE: 1-2 weeks

GOOD FOR: metal fabricators * aspiring iron workers *
construction students * machining students

URL: <http://www.harrisrebar.com/>



Harris Rebar bends and cuts the rebar NUCOR steel produces, then their iron workers weld it all together during construction.

HEWE'S CRAFT MARINE

Colville, WA

Aluminum fishing boat manufacturer

POSITIONS OPEN: welder/fabrication helper, paint prep, assembly 1, warehouse

Current positions can be viewed here:

<http://www.hewescraft.com/careers/>

DESIRED SKILLS: reliable, easy to work with, enjoys working in teams, any metal fabricating experience, precision measurement

BENEFITS OFFERED: Medical, Dental, PTO, 401k, profit sharing after 1 year of employment, overtime

HOURS: Monday – Thursday 9 hour days; Fridays are 4 hour days

STARTING WAGES: \$13-\$16/hr

HOW TO APPLY: In-person, online at

<http://www.hewescraft.com/careers/> or send resume and application to careers@hewescraft.com.

Downloadable application here:

<http://www.hewescraft.com/wp-content/uploads/2018/06/Job-Application-Web.pdf>

HIRING REQUIREMENTS: resume, cover letter, interview, background check, drug test, measurement test, welding assessment (for welding positions)

HIRING TIMELINE: 1-2 weeks

GOOD FOR: boat enthusiasts * students who like fishing * auto collision and repair * welding students

URL: <http://www.hewescraft.com/>



They value a balanced lifestyle, fishing and keep a couple boats in their yard for whenever employees want to take 'em out!

Although they don't work weekends or operate 24/7, Hewe's Craft still turns out 3-4 boats per workday!

ISLAND TUG & BARGE

Seattle, WA

Tug and barge services, hauls and ships most bulk material in the Puget Sound

ENTRY-LEVEL POSITIONS: welder, deck hand (need merchant mariner card)

OF OPENINGS: 1 – 2

DESIRED SKILLS: punctual, responsive, eager to learn

BENEFITS OFFERED: Medical, PTO, 401K

HOURS: Day shifts

STARTING WAGES: \$17/hr

HOW TO APPLY: email your resume to

dispatch@itbco.com

HIRING REQUIREMENTS: resume, drug test, interview

HIRING TIMELINE: 1-2 weeks

GOOD FOR: welders * students who enjoy being around large boats and industry outside

URL: <http://www.islandtugandbarge.com/>



J.A. JACK & SONS

Seattle, WA (Georgetown)

Limestone distributor and quarry

LOCATION SIZE: 30

POSITIONS OPEN: warehouse helpers, heavy equipment operators, drivers

DESIRED SKILLS: hard worker, shows up on time with positive attitude

BENEFITS OFFERED: Medical, PTO, 401K

HOURS: Day shifts

STARTING WAGES: \$17/hr

HOW TO APPLY: <https://www.arcosa.com/jobs/>

HIRING REQUIREMENTS: resume, interview

HIRING TIMELINE: 1-2 weeks

GOOD FOR: strong workers * ok working in dirty environment * ok around loud equipment

URL: <https://arcospecialtymaterials.com/location-seattle-regional-office/>



JD OTT, INC

Seattle, WA (Sodo)

Aerospace manufacturing and part supplier

ENTRY-LEVEL POSITIONS OPEN: shipping, receiving, machine maintenance, machine operation
DESIRED SKILLS: self-motivated, positive attitude, integrity, intermediate to advanced math skills
BENEFITS OFFERED: PTO, Medical, Vision, compensated apprenticeship program, annual bonuses
HOURS: multiple shifts
STARTING WAGES: \$15 – 18/hr depending on experience
HOW TO APPLY: online, in person or by email. Bring resume to location; apply online at www.jdott.com
HIRING REQUIREMENTS: resume, Interview
HIRING TIMELINE: less than 1 week



Near Link
Light Rail
station! |



WILL CONSIDER SOMEONE UNDER 18 WILL CONSIDER SOMEONE PART TIME

KENWORTH/PACCAR

Renton, WA

Semitruck manufacturer

LOCATION SIZE: 550

ENTRY LEVEL POSITIONS: assemblers, painters, material handlers (forklift) Current positions can be seen at

<https://jobs.paccar.com/search/?createNewAlert=false&q=&locationsearch=renton>

DESIRED SKILLS: get along with others, take constructive criticism, eager to learn

BENEFITS OFFERED: Medical, Dental, Paid Time Off, holidays, 401K, tuition reimbursement, overtime

HOURS: 6:30am – 3pm

STARTING WAGES: \$15 - \$17/hr

HOW TO APPLY: Online; on job posting. Find job postings here:

<https://jobs.paccar.com/search/?createNewAlert=false&q=&locationsearch=renton>

HIRING REQUIREMENTS: resume, drug test, interview, background check, health evaluation

HIRING TIMELINE: 1-2 weeks

GOOD FOR: manufacturing students * painting/finishing students * forklift-interested

URL: <https://www.kenworth.com/trucks>

Renton is the only PACCAR plant in the U.S. making trucks large enough for mining and dredging equipment!



Lafarge & Egge Tubing

Lynnwood, WA

Mid-market aerospace tube assembly and machined parts

COMPANY SIZE: 30

ENTRY-LEVEL POSITIONS: machinists I, operating assistant Current positions can be viewed here:

<https://www.lafargeandegge.com/careers/>

TYPICAL # OF ENTRY-LEVEL OPENINGS: 2 -3

DESIRED SKILLS: Fabrication, Mechanical Aptitude, able to multi-tasking; print reading, GD&T

BENEFITS OFFERED: Medical, vision, dental, PTO, 401k, annual bonuses. Typically move you up after 90 days of training

HOURS: Day shifts, half day production on Fridays

STARTING WAGES: \$14 - 17/hr

HOW TO APPLY: Apply online or send resume to info@lafargeandegge.com and say you are hoping to apply for an entry level position.

HIRING REQUIREMENTS: background check, drug test, resume, interview

HIRING TIMELINE: 1-2 weeks

GOOD FOR: machining students

URL: <https://www.lafargeandegge.com/>



WILL CONSIDER SOMEONE PART TIME WILL CONSIDER A 17-YEAR-OLD

MACHINISTS INC

Seattle, WA (South Park)

Custom manufacturer of parts for Boeing, Genie, SpaceX, NASA, US Navy, etc.

COMPANY SIZE: 170

ENTRY-LEVEL POSITIONS OPEN: machine shop attendant, toolroom attendant, machinist,

DESIRED SKILLS: self-motivated, positive attitude, integrity, intermediate to advanced math skills

BENEFITS OFFERED: PTO, Medical, Vision, 401 K, Tuition Reimbursement, onsite apprenticeships and job growth HOURS: 24/7; overtime available

STARTING WAGES: \$18 – 20/hr depending on job

HOW TO APPLY: online, in person or by email.

FOLLOW UP: If Adam doesn't follow up in 72 hours, send him a nice reminder that you hope he finds you to be a good fit and reattach resume.

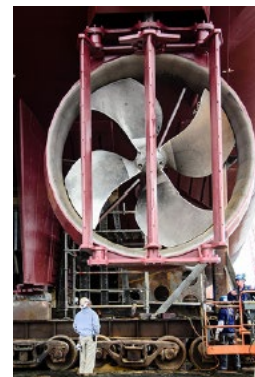
HIRING REQUIREMENTS: resume, Interview, drug test

HIRING TIMELINE: 1 – 2 weeks

GOOD FOR: engineer-aspiring students * creative thinkers * students who like welding or machining

URL: www.machinistsinc.com

OPEN TO PART TIME EMPLOYEES



MACMILLAN PIPER

Seattle, WA (multiple)
Tacoma, WA



Near Link
Light Rail
station!

Import and export shipping facility

COMPANY SIZE: 100

ENTRY-LEVEL POSITIONS: mechanics, warehouse attendants

DESIRED SKILLS: forklift driving, mechanical skills, get along with others

BENEFITS OFFERED: Medical, PTO, 401K

HOURS: 24/7

STARTING WAGES: \$17/hr for entry level mechanics, \$13- 15/hr for warehouse employees

HOW TO APPLY: Online

HIRING REQUIREMENTS: resume, drug test,

interview HIRING TIMELINE: 1-2 weeks

GOOD FOR: diesel mechanic students * forklift interested * able to stand for long periods and lift 50lbs

URL: www.macpiper.com



MARINE SERVICENTER

Anacortes, WA

Repair and maintain sail boats, yachts

COMPANY SIZE: 43

ENTRY-LEVEL POSITIONS: welders, mechanics, electricians, fuel dock

OF OPEN POSITIONS: 2

DESIRED SKILLS: welding experience, mechanical aptitude, fiberglass experience, friendly and on time

BENEFITS OFFERED: medical, schedule flexibility

HOURS: Day shifts

STARTING WAGES: \$14 - \$20/hr

HOW TO APPLY: Call desired location for hiring opportunities

HIRING REQUIREMENTS: resume, interview, welding test

HIRING TIMELINE: 1-2 weeks

GOOD FOR: welding students * automotive students

URL: <https://marinesc.com/>

OPEN TO PART-TIME EMPLOYEES OPEN TO 17 YEAR OLDS



MUNSON BOATS

Arlington, WA

Custom Aluminum Boat Manufacturer

ENTRY LEVEL POSITIONS: interested in interested in welders, fitters, marine electricians, marine mechanics, outfitters, boat building apprenticeship

DESIRED SKILLS: basic hand tool use, able to measure, gets along well with others

BENEFITS OFFERED: Medical, 401 k, Vision, Paid Time off, four 10-hour work days, Holidays off.

HOURS: 7am – 5:30pm (Monday – Thursday, Fridays off!)

STARTING WAGES: \$13 - \$18/hr

HOW TO APPLY: Call 360-707-2752 or email info@munsonboats.com for current openings

HIRING REQUIREMENTS: resume, interview

HIRING TIMELINE: 1 week

GOOD FOR: boat enthusiasts * MIG welders

URL: <https://www.munsonboats.com/>

Four-day work weeks, 10hr/day. Monday through Thursday!



NICHOLS BROTHERS BOAT BUILDERS

Freeland, WA (Whidbey Island)

Ship manufacturer. Provides maintenance and repair services.

COMPANY SIZE: 250

ENTRY LEVEL POSITIONS: laborers to become apprentices in: Painting, Welding, Machining, Crane Operating, Ship Fitting, Pipe Fitting

NOTE: Most apprentices start as laborers for 1-3 months to prove work ethic and find trade most interested in.

DESIRED SKILLS: punctual, eager to learn, good attitude and gets along well with others

BENEFITS OFFERED: Medical, PTO, 401K, overtime

HOURS: Day shifts

STARTING WAGES: \$13.77/hr for laborers, \$19.50/hr for entry-level apprentices

HOW TO APPLY: online at

<http://www.nicholsboats.com/careers>

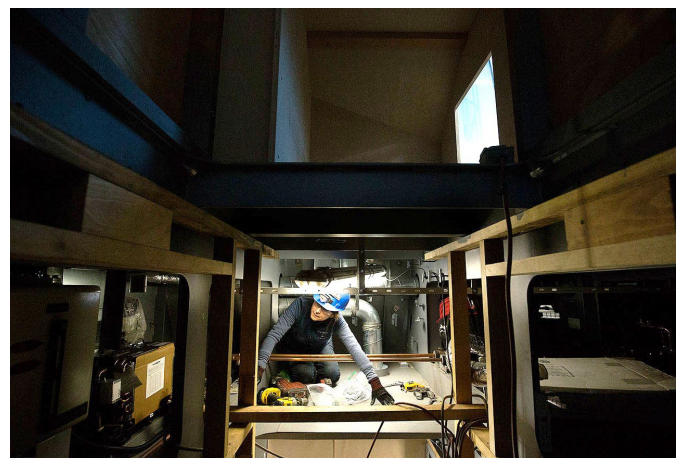
HIRING REQUIREMENTS: drug test, interview

HIRING TIMELINE: 1-2 weeks or longer

GOOD FOR: anyone interested in welding, painting, electrical, machining, crane operating* those who enjoy large industrial equipment

URL: <http://www.nicholsboats.com/>

Great for students figuring out which trades they like best. Great for those who like large equipment or boats.



NUCOR STEEL

Seattle, WA (West Seattle)

Fortune 150 company, Nucor Steel is the largest recycler in America. They recycle and melt steel into rebar.

LOCATION SIZE: 300

ENTRY LEVEL POSITIONS: melt shop helper, fabrication shop helper

TYPICAL # OF ENTRY LEVEL OPENINGS: 1 – 2

DESIRED SKILLS: Gets along with others, enjoys learning, understanding of safety protocols in shop

BENEFITS OFFERED: Medical, PTO, 401K, Profit Sharing

HOURS: Day shifts

STARTING WAGES: \$12/hr BUT with profit sharing and production bonuses, it comes out to \$30+/hr. Employees receive bonuses in their pay stub each week, so not in large lump sums. Profit sharing ensures NO LAY OFFS.

HOW TO APPLY: Online, by email, in person

HIRING REQUIREMENTS: resume, background check, drug test (90 day!!), interviews

HIRING TIMELINE: 2+ weeks

GOOD FOR: students who enjoy high-paced environments * OK in loud environments * OK in hot environments * enjoy electronics or metal sciences

URL: <https://nucor.com/>



NUCOR TECHNICAL ACADEMY

Seattle in Winter & Summer; Alabama in Fall and Spring

3 year apprenticeship with Nucor and Sheldon State University (Alabama) to become an industrial electrician

REQUIREMENTS: Need a 2.75 GPA, Resume in chronological order, 1 page essay on career goals.

BENEFITS: Nucor pays (about \$140,000) for your room and board, tuition, books, and time training on the job or in classroom. Come out with job at Seattle Plant making more or less \$90,000/yr

URL: <https://nucor.com/nucor-technical-academy/>

NUCOR TECHNICAL ACADEMY VIDEO:

<https://vimeo.com/306914277>



PACIFIC IRON AND METAL

Seattle, WA (Sodo)



Near Link
Light Rail
station!

Metal Recycling facility

COMPANY SIZE: 30+

ENTRY LEVEL POSITIONS: entry-level mechanic, general laborer, forklift operator

TYPICAL # OF OPENINGS: 2 – 3

DESIRED SKILLS: For laborers & forklift operators: dependable, willing to get dirty and work hard For entry-level mechanics: 2 years of shop class, mechanically inclined, hard work ethic

BENEFITS OFFERED: Medical, Dental, Vision, PTO, profit sharing and bonuses, overtime

HOURS: day shift

STARTING WAGES: Mechanics: \$18 - \$22/hr depending on experience General laborer & forklift operator: \$15 - \$20/hr

HOW TO APPLY: send resume to careers@paciron.com and ask if they have open positions you can apply for

HIRING REQUIREMENTS: resume, interview, background check

URL: <http://www.paciron.com>



A good group of people and a high paced environment! In SODO which is great for sporting events (you have free parking!)

Good for someone who wants to learn more about science of recycling metals.

PACIFIC YACHT MANAGEMENT

Seattle, WA (Magnolia)

One-stop-shop for yachts; maintenance, repair and moorage of yachts

COMPANY SIZE: 16

ENTRY LEVEL POSITIONS: department helpers

OF OPENINGS: 2

DESIRED SKILLS: eager to learn, gets along with others, basic hand tool experience

BENEFITS OFFERED: Medical, PTO, 401K

HOURS: 8:30am – 5pm; longer hours in spring

STARTING WAGES: \$17/hr

HOW TO APPLY: office@pacificyachtmanagement.com and ask if there are any openings.

HIRING REQUIREMENTS: interview, cover letter, driver's license

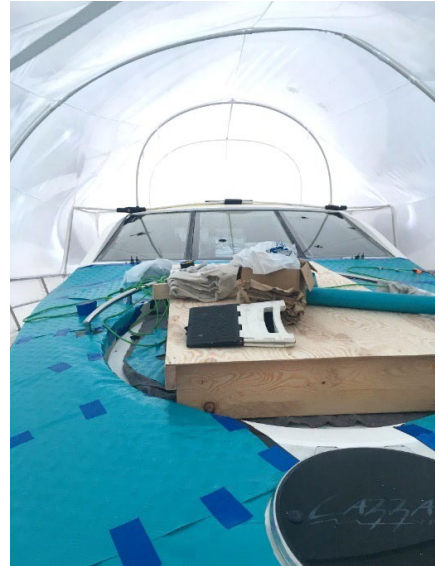
HIRING TIMELINE: 1-2 weeks

GOOD FOR: students who want to work on exploring their interests and building skill sets on yachts * those who would like a smaller company and more one-on-one time with different trade experts * OK working at different locations.

URL: <http://www.pacificyachtmanagement.com/>

When starting, you will work with different department leads every week or two and figure out what you like.

Need to be comfortable driving around Seattle as boats will often be in another local marina.





PLATYPUS MARINE, INC.

Port Angeles, WA

Shipyard

ENTRY LEVEL POSITIONS OPEN: typically, 15 jobs available (marine painters, general laborers); willing to hire part-time; willing to hire someone under 18

DESIRED SKILL: Mechanical ability, trades, paint, welding, fiberglass, carpentry, computer skills, team player

BENEFITS OFFERED: Medical, dental, PTO, 401K

HOURS: Swing shift, Offers overtime

STARTING WAGES: Depends on experience

HOW TO APPLY: Apply online, in person, or by email hr@platypusmarine.com

HIRING REQUIREMENTS: Background check, drug test, interview,

HIRING TIMELINE: 1-2 weeks

GOOD FOR: Students who enjoy painting and welding.

URL: <https://platypusmarine.com/>



MANUFACTURING INDUSTRIAL COUNCIL

JUNIORS ONLY

PUGET SOUND NAVAL SHIPYARD

Bremerton, WA

United States naval shipyard

ENTRY-LEVEL POSITIONS: work-study students (Juniors)

OF OPENINGS: 30

DESIRED SKILLS: responsible, punctual, patriotic, honest, experience with hand tools, power tools and mechanics.

BENEFITS OFFERED: medical, dental, 401k, overtime for those 18 and over

HOURS OF OPERATION: 24/7; juniors will work summers and 2nd semester senior year

STARTING WAGES: \$11.50/hr

HOW TO APPLY: Online

HIRING REQUIREMENTS: background check, interview

HIRING TIMELINE: longer than 2 weeks

GOOD FOR: Juniors near Bremerton area who would enjoy an internship at a very large naval shipyard.

URL: <https://usajobs.gov/>

WILL HIRE STUDENTS UNDER 18



PUGET SOUND WINDOW MAINTENANCE

Greater Seattle Area

High rise, mid-rise and low-rise window cleaners

ENTRY-LEVEL POSITIONS: high rise positions, swing shift interior office cleaners; mid-rise window cleaner

OF OPENINGS: 2

DESIRED SKILLS: loves heights and outdoors, athletic with good motor skills, problem solving skills **BENEFITS OFFERED:** medical, 401k, bonuses, auto and phone stipends, overtime

HOURS OF OPERATION: day shift for outdoor window cleaning, swing shift for interior cleaners (5:30pm – 2am)

STARTING WAGES: \$20/hr

HOW TO APPLY: Online at <http://pswm.net/careers/>

HIRING REQUIREMENTS: background check, drug test, resume, interview

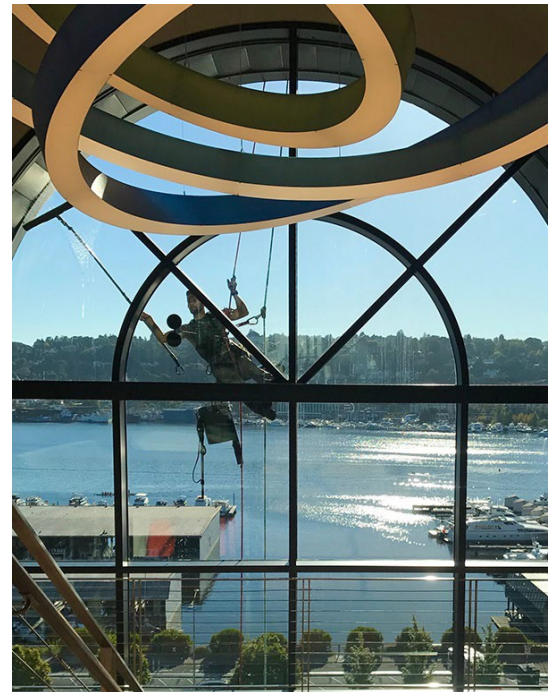
HIRING TIMELINE: 1-2 weeks

GOOD FOR: height and thrill seekers * easily bored students * physically fit

URL: <http://pswm.net/>

OPEN TO 17 YEAR OLDS

OPEN TO PART TIME POSITIONS





ROMAC INDUSTRIES, INC.

Bothell, WA
Sultan, WA

Manufacturer of pipe products for the waterworks industry

ENTRY LEVEL POSITIONS OPEN: typically, 20 jobs available (assembler 1, process machine operator 1)

DESIRED SKILLS: Ability to perform job with a continued focus on safety and production, willingness to share ideas and work well in a team setting.

BENEFITS OFFERED: Medical, dental, PTO, tuition reimbursement, 401K

HOURS: 1st, 2nd, and 3rd shift available, part time available in some instances

STARTING WAGES: \$15-17/hour, DOE

HOW TO APPLY: online, by email: hr@romac.com, in-person

HIRING REQUIREMENTS: Background check, drug test, interview,

GOOD FOR: Students who enjoy welding and engineering.

HIRING TIMELINE: 1-2 weeks

URL: <https://romac.com/>



MANUFACTURING INDUSTRIAL COUNCIL

S3 MARITIME

Seattle, WA (Magnolia)

Repair, refit, and maintain yachts; manufacture electronic system parts

COMPANY SIZE: 40

ENTRY-LEVEL POSITIONS: rigger, helper

TYPICAL # OF ENTRY-LEVEL OPENINGS: 2

DESIRED SKILLS: able to perform basic mechanical skills, able to listen, learn and follow instruction

BENEFITS OFFERED: Medical, PTO, dental

HOURS: Day shifts

STARTING WAGES: \$15/hr (based on ability to perform)

HOW TO APPLY: Call 206-420-4932 for current openings.

HIRING REQUIREMENTS: resume, intense interview

HIRING TIMELINE: 1-2 weeks

GOOD FOR: students who like boats or cars * mechanical interests * students who would enjoy trying new things and working with different departments (electronics, welding, engine, repair, body work)

URL: www.s3maritime.com



SAFE BOATS INTERNATIONAL

Bremerton, WA

High-speed, aluminum boat manufacturer for military entities

ENTRY-LEVEL POSITIONS: marine finisher, welder 1, custodian, shipping and receiving, marine systems integrator 1, machine operator 1. Current openings can be seen at: https://workforcenow.adp.com/mascsr/default/mdf/recruitment/recruitment.html?cid=77d5ef68-97aa-4ba4-83ee-2d3be769a0eb&cclid=19000101_000001&type=MP&lang=en_US

TYPICAL # OF ENTRY LEVEL JOB OPENINGS: 2 - 3 (check often!) **DESIRED SKILLS:** MIG welding for welder position, experience using hand tools and power tools, reliable, positive attitude

BENEFITS OFFERED: 4-day work weeks, PTO, Medical, Dental, Vision, overtime, tuition reimbursement/paid training, boat rides (60 mph!)

HOURS OF OPERATION: M-Th; day shift & swing shift

STARTING WAGES: \$15 – \$17.83/hr depending on position

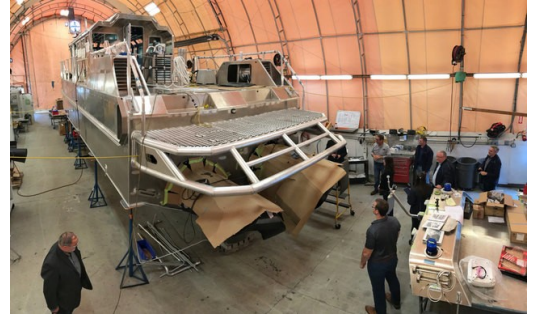
HOW TO APPLY: Online (use URL above to find job postings and apply directly online)

HIRING REQUIREMENTS: resume, interview, drug test. May include a basic assessment test like reading a tape measure, basic hand tool use. Welding 1 position will require a MIG weld test. Cover letter is a bonus!

HIRING TIMELINE: 2 weeks

GOOD FOR: Students who love fast boats, welders, collision and repair students

URL: www.safeboats.com



SAFE hires their boat drivers from the Coast Guard or Marines, someone who drove a SAFE Boat while serving.

Many marines have come home from serving in Iraq and loved their SAFE river vessel so much, they moved to Bremerton to build them.

The Boats, and drivers, have to be able to steer as sharp and as fast as possible. Each boat comes equipped with customer needs, whether a fire hose or military rifles.

SEATTLE PUBLIC UTILITIES

Greater Seattle Area, WA

Public water, sewer, and garbage utilities

COMPANY SIZE: 1400

POSITIONS OPEN: Water Pipe Worker Apprentice; Drainage and Wastewater Collection Worker Apprentice

DESIRED SKILLS: A commitment to learning and accepting feedback, ability to work outside in all kinds of weather, and meeting minimum qualifications.

BENEFITS OFFERED: Medical, Dental, Vision, PTO, 401K

HOURS: Day shifts

STARTING WAGES: \$20+/hr

HOW TO APPLY: Online <https://www.seattle.gov/utilities/about-us/careers>

HIRING REQUIREMENTS: resume, aptitude test, drug test, interview, driver's license**
Driving record must allow applicant/employee to obtain a Commercial Driver's License.

HIRING TIMELINE: 2+ weeks

GOOD FOR: students who can work in all kinds of environments * OK getting dirty * OK driving a lot

URL: <https://www.seattle.gov/utilities/about-us/careers>





TAYLOR SHELLFISH FARMS

Sulton, WA
Pacific County, WA
Skagit County, WA

Family-owned shellfish farm that grows Oysters, Clams, Mussels, and Geoduck.

ENTRY LEVEL POSITIONS OPEN: “tons” available (shellfish farmer, processing worker, maintenance worker)

DESIRED SKILL: entry level, hard workers, likes to work outside

BENEFITS OFFERED: Medical, dental, PTO, tuition reimbursement, 401K, product and dining discounts.

HOURS: Varies

STARTING WAGES: \$15+, many positions include piecework bonus

HOW TO APPLY: online: taylorshellfish.com/about-us/careers

HIRING REQUIREMENTS: interview

HIRING TIMELINE: less than 1 week

GOOD FOR: Culinary students and students who love the outdoors.

URL: taylorshellfishfarms.com



MANUFACTURING INDUSTRIAL COUNCIL

THERMETRICS

Seattle, WA (Magnolia)

Thermal and medical mannequin testing



ENTRY-LEVEL POSITIONS: summer intern, fulltime apprentice

TYPICAL # OF OPENINGS: 2

DESIRED SKILLS: creative thinker and problem solver, able to follow instructions carefully, precision measurement and blueprint reading/exposure

BENEFITS OFFERED: medical, dental, 401k, PTO, tuition reimbursement (after 1 yr)

HOURS OF OPERATION: day shift

STARTING WAGES: \$17/hr

HOW TO APPLY: Call 206-456-9119 for current openings.

HIRING REQUIREMENTS: resume, cover letter, background check, interview

HIRING TIMELINE: 1-2 weeks

GOOD FOR: Aspiring engineers

URL: <http://www.thermetrics.com/>



WILL HIRE SUMMER INTERN OR STUDENT AT 17 OPEN TO PART TIME EMPLOYEES

TRIDENT SEAFOODS

Alaska (headquartered in Ballard, Seattle, WA)

Largest seafood processor in North America

ENTRY-LEVEL POSITIONS OPEN: Alaska summer interns & non-interns

DESIRED SKILLS: willing to go to Alaska, hard worker, motivated by money and experience, enjoys seafood

BENEFITS OFFERED: Interns: Room and board paid for, meals paid for, transportation provided.

PLEASE NOTE: Non-intern positions receive Medical, 401k, dental, vision. Current non-intern positions can be viewed here: <https://www.tridentseafoods.com/Join-Our-Team/Job-Openings>

HOURS: Day shifts + lots of overtime

STARTING WAGES: interns at \$10.87/hr; overtime [anything more than 8hrs/day] is \$16/hr

HIRING REQUIREMENTS: willing to go to Alaska, 18 years and

HIRING TIMELINE: 1-2 weeks or longer

GOOD FOR: Aspiring fisherman * 18 year olds who want an experience in Alaska * outdoor enthusiasts

URL: www.tridentseafoods.com



There are support operations in Washington, Oregon, and Alaska. Interns require a GED/Diploma, but other positions only require you to be 18



VAAGEN BROS. LUMBER, INC.

Colville, WA
Usk, WA

Lumber Manufacturing

ENTRY LEVEL POSITIONS OPEN: typically, 10 jobs available (unlisted, cleanup, stacker, sorter, band & tally, bagger).

DESIRED SKILLS: Ability to perform job with a continued focus on safety and production, willingness to share ideas and work well in a team setting.

BENEFITS OFFERED: Medical, dental, PTO, (benefits after 90 days of employment)

HOURS: M-F, 6-7am start time depending on location

STARTING WAGES: \$18, (entry level starting wage is \$18-\$23 DOE)

HOW TO APPLY: online, www.vaagenbros.com

HIRING REQUIREMENTS: Background check, drug test, interview, pre-employment physical and drug screen

HIRING TIMELINE: 1-2 weeks

GOOD FOR: Students who enjoy the outdoors.

URL: vaagenbros.com



MANUFACTURING INDUSTRIAL COUNCIL



WESTPORT YACHTS

Port Angeles, WA
Westport, WA

Manufacture and Re-fit of Yachts from 34M – 52M



ENTRY LEVEL POSITIONS OPEN: 2-3 jobs available (laminator, fairing, carpentry, electrical, plumbing, veneer, etc.)

DESIRED SKILLS: Great attitude, willing to work in all departments if needed, great attendance

BENEFITS OFFERED: Medical, dental, PTO, 401K, paid holidays, life insurance

HOURS: M-F, 6-7am start time depending on location

STARTING WAGES: \$16-19/hour DOE

HOW TO APPLY: Apply online at westportyachts.com, email, or in person at westportyachts.com/careers,

HIRING REQUIREMENTS: Background check, drug test, interview.

HIRING TIMELINE: 1-2 weeks

GOOD FOR: Students who like working on large yachts.

URL: westportyachts.com



MANUFACTURING INDUSTRIAL COUNCIL

WOOLDRIDGE BOATS

Seattle, WA (South Park)

Recreational Aluminum Boat Manufacturers

COMPANY SIZE: 24

ENTRY-LEVEL POSITIONS OPEN: helper positions

DESIRED SKILLS: aluminum welding, can use tape measurer, positive attitude and self-motivated

BENEFITS OFFERED: Medical; 401k and PTO after 1 year (must be 25)

HOURS: 7am – 3pm

STARTING WAGES: \$15 - \$17

HOW TO APPLY: call 206-722-8998 for current openings

HIRING REQUIREMENTS: cover letter, drug test, background check, interview

HIRING TIMELINE: longer than 2 weeks

GOOD FOR: students who like fishing or boats * enjoy smaller companies * love welding and fabrication * enjoy working in pairs or teams

URL: www.wooldridgeboats.com

A lot of Wooldridge Boats are jet powered with an inboard engine, allowing them to hydroplane and go over shallow waters.

